

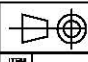
ALUMINIUM EMBOSSED PLATE DOOR

Aluminium embossed plate door

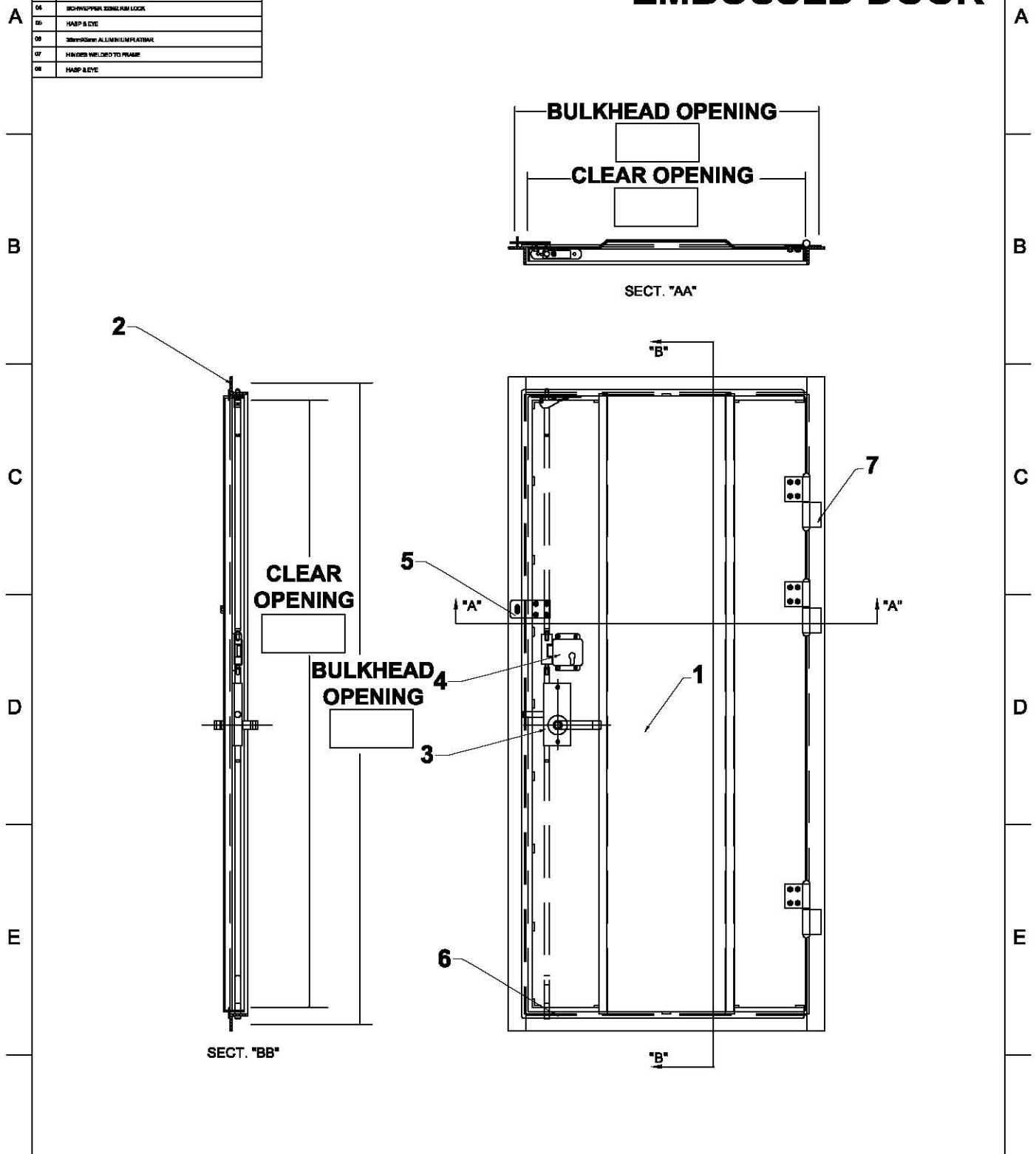
Door panel manufactured from 5mm aluminium embossed plate. 50 x 50 x 6mm mild steel frame. 3 point surface mounted latch system. Door fitted with rim lock. Hasp and eye fitted for padlock. Three weld on hinges fitted to door and frame.





ALUMINIUM EMBOSSED PLATE DOOR

 GENERAL NOTES: NO ALTERATIONS ALLOWED UNLESS AGREED BY McGEEOCH MARINE LIMITED. DO NOT SCALE FROM DRAWINGS.	
ITEM	DESCRIPTION OF ITEM
01	3mm ALUMINIUM GRADE 6063-C-CONDITION EMBOSSED DOOR PANEL
02	3mm MILD STEEL GRADE (S205GH) ANGLE FRAMEWORK
03	3-POINT EMPAGNOLETTE LATCH SYSTEM
04	SCHWIPPER BOLDFORM LOCK
05	HAMP & EYE
06	3mm ALUMINIUM PLATE
07	HANDS WELDED TO FRAME
08	HAMP & EYE

NAVY- ALUMINIUM EMBOSSED DOOR



MATERIAL REQUIREMENTS		HANDING	BULKHEAD DIM:	ALUMINIUM DOOR
MATERIAL	PLEASE TICK	NOTE:  		McGEEOCH MARINE Ltd 38 Loanbank Quadrant, Govan Glasgow G61 3HZ e-mail: sales@mml-marine.com Tel: +44 141 446 5353
STAINLESS STEEL			C/OPENING DIM:	
MILD STEEL				
OTHER (PLEASE SPECIFY)				



THESE DESIGNS AND PLANS ARE COPYRIGHT AND ARE NOT TO BE USED OR REPRODUCED WHOLLY OR IN PART OR TO BE USED IN ANY PROJECT WITHOUT THE WRITTEN PERMISSION OF McGEEOCH MARINE LTD.