

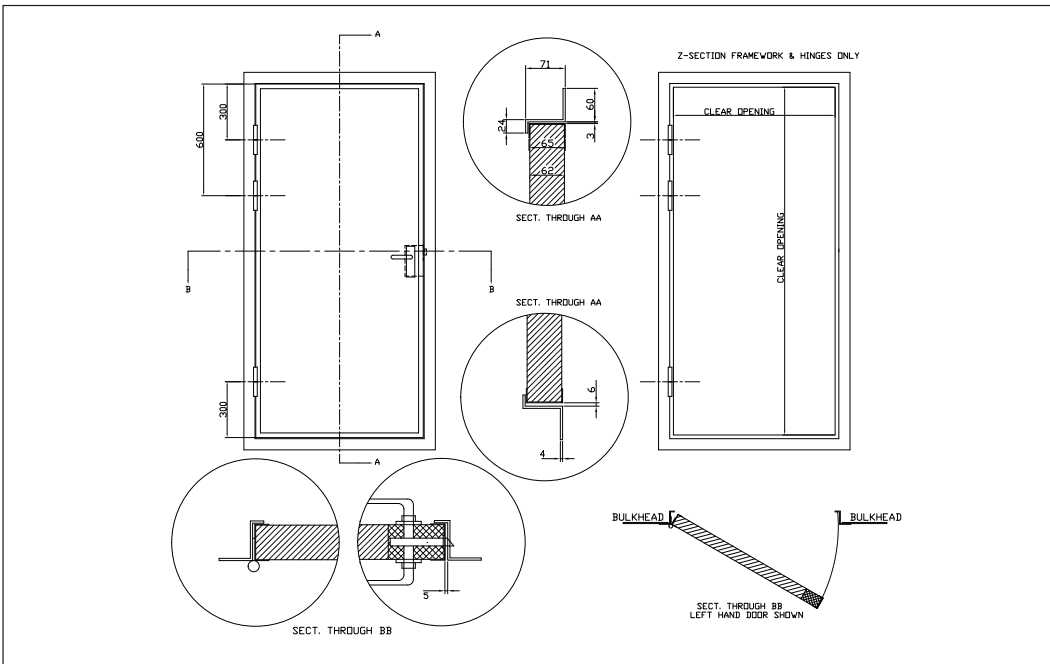


A60 INTERNAL SINGLE LATCH DOOR

Door blade manufactured from 1.5mm mild steel. Door frame manufactured from 4mm Z section frame. 3 stainless steel lift off hinges. Mortice latch, stainless steel lever handles and back plates.

OPTIONS

- A60 rated vision panel
- Stainless steel panic bar
- Painted to RAL colour



MML