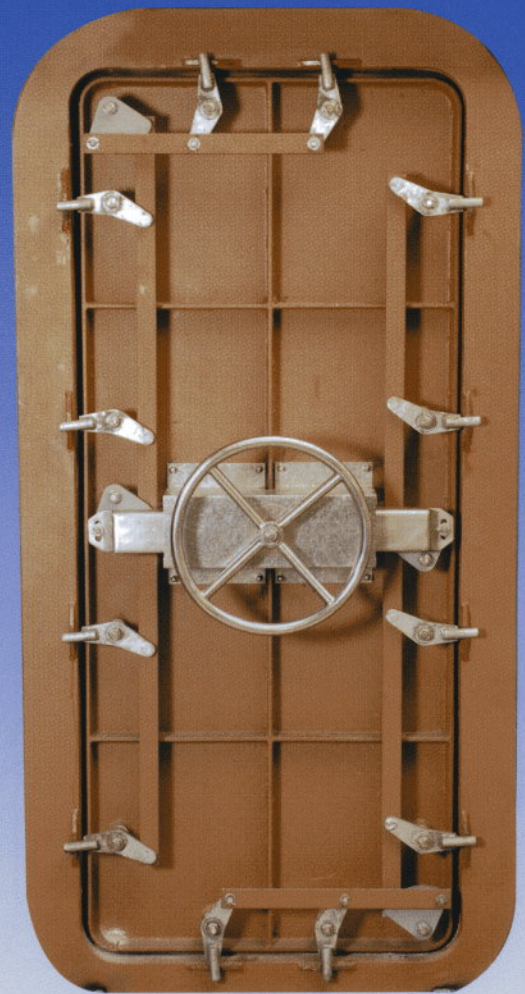


12 CLIP WATERTIGHT DOOR

12 clip single action watertight door. (7mm head of water)

Door manufactured from 8mm cover plate, suitably stiffened with weld on ribs and fitted with a 40 x 25mm section perimeter seal. Secured by 12 in no. clips linked together and operated by a central hand Wheel.

Door available with shock rating."



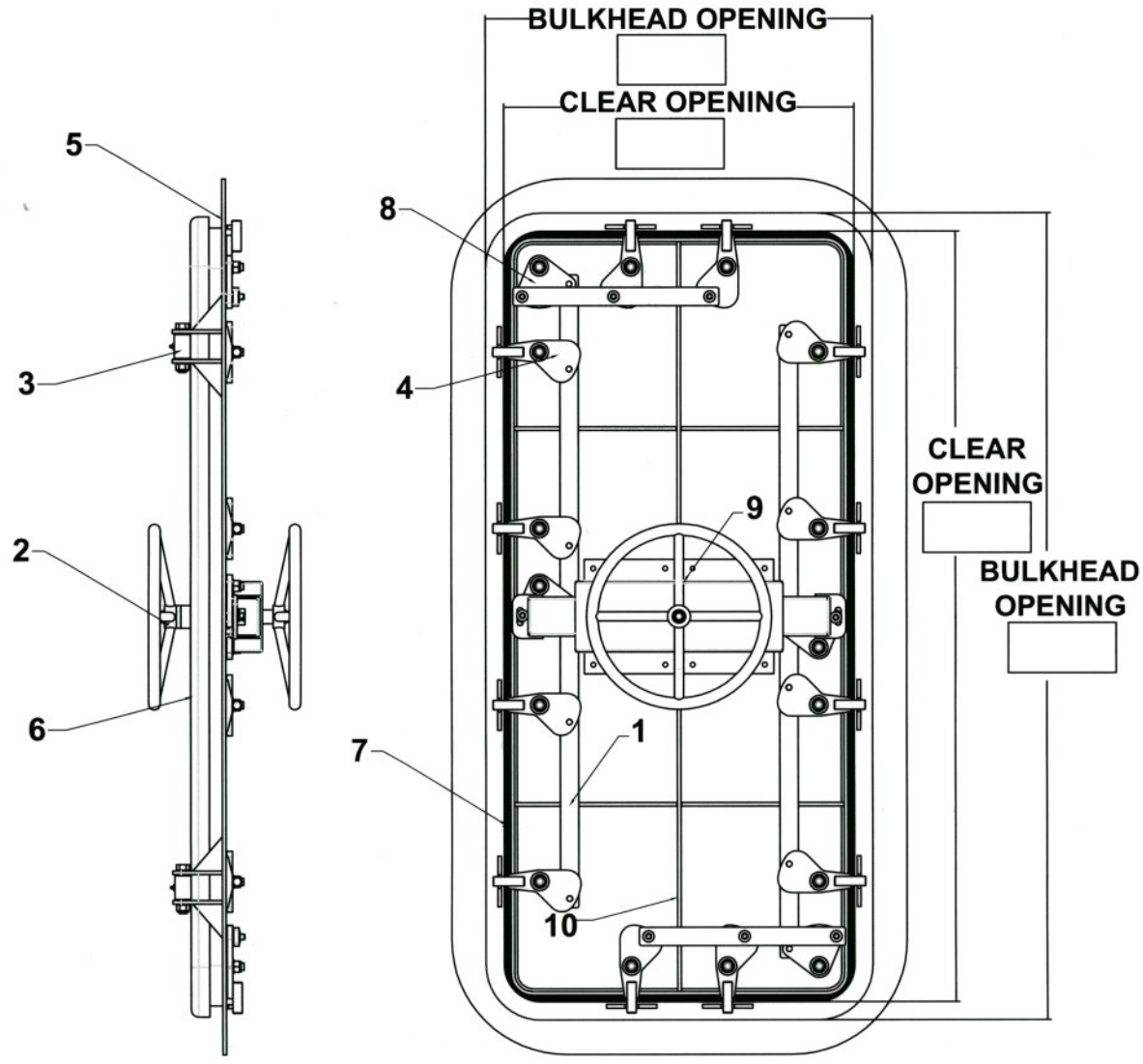
12 CLIP WATERTIGHT DOOR

GENERAL NOTES: NO ALTERATIONS ALLOWED UNLESS AGREED BY McGEEOCH MARINE LIMITED. DO NOT SCALE FROM DRAWINGS.	
ITEM	DESCRIPTION OF ITEM
01	LINK BARD
02	HAND WHEEL
03	WATERTIGHT SHOCK AB HINGE
04	WATERTIGHT LOCKING DOOSE
05	75mm X 50mm X 6mm ANGLE MATERIAL
06	8mm MATERIAL
07	RUBBER SEAL
08	WATERTIGHT CORNER CLEAT
09	CENTRE DRIVE MECHANISM
10	DOOR STIFFENERS 40mm X 6mm Flat Bar

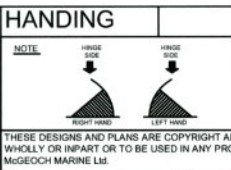
SHOCK RATED WATERTIGHT DOOR 7.3 METERS

A
B
C
D
E
F

A
B
C
D
E
F



MATERIAL REQUIREMENTS	
MATERIAL	PLEASE TICK
STAINLESS STEEL	<input type="checkbox"/>
MILD STEEL	<input type="checkbox"/>
OTHER (PLEASE SPECIFY)	<input type="checkbox"/>



BULKHEAD DIM:
C/OPENING DIM:

WATERTIGHT DOOR

McGEOCH MARINE Ltd
38 Loanbank Quadrant, Govan
Glasgow G51 3HZ
e-mail: sales@m-m-l.com
Tel: +44 141 445 5353

THESE DESIGNS AND PLANS ARE COPYRIGHT AND ARE NOT TO BE USED OR REPRODUCED WHOLLY OR IN PART OR TO BE USED IN ANY PROJECT WITHOUT THE WRITTEN PERMISSION OF McGEEOCH MARINE LTD.

1 2 3 4